



## The FISHTRON CatFish TX3 Catfish Fishing Bite Alarm with an Integrated Transmitter

*Instructions for operation and use (last updated on 1 Mar 2021)*

*This innovative bite alarm is primarily intended for catfish fishing by attaching it to a fishing rod body. It features a unique, patented way of detecting a bite using state-of-the-art components with the lowest possible power consumption, ensuring high reliability and long battery life.*

*The bite detection is not only evaluated by the fishing rod bending but also by the time it's bent, therefore achieving a high resistance against the*

*bite alarm's false alarms. The bite is optically indicated with a red LED, acoustically and also by transmitting to a compatible receiver or lamp. **New with the option to turn off the sounds.***

*This alarm can be paired with the FISHTRON RX SIX, FISHTRON RX MULTI or FISHTRON RX MINI receivers, along with the FISHTRON WRL1 and FISHTRON WRL2 lamps.*

### Description of the FISHTRON CatFish TX3

#### Basic functions of the FISHTRON CatFish TX3 bite alarm

- sound and optical fish bite signalling
- option to turn OFF the sounds
- sensitivity control in five stages
- integrated remote listening transmitter (works with the FISHTRON RX MULTI, FISHTRON RX SIX and FISHTRON RX MINI receivers)
- low power consumption - long battery life
- two sizes of fishing rod holder included

#### Attaching the bite alarm to a fishing rod

There are two holders in the package, which are attached to a fishing rod according to the procedure below and the bite alarm is inserted into them. Place the bite alarm with its switch towards yourself, that is, towards a reel to operate it easily and to allow yourself to see the optical signalling well.



## Turning on and setting the bite alarm

The bite alarm is turned on and set with one toggle switch located at the bottom; it has several positions.

- The toggle in the middle position means the bite alarm is off.
- Switch the toggle to the left position, the bite alarm is turned on and evaluates the bites. When switched on, the red LED indicates the selected sensitivity by flashing, where 1 flash means the lowest sensitivity and 5 flashes mean the highest sensitivity.
- By switching the switch toggle to the right position, the bite alarm sensitivity can be set in five stages; this position is momentary, i.e. the toggle returns itself to the middle position when the bite alarm is turned off. To change the sensitivity setting, hold the toggle in the right position for about 1 second, the red LED indicates the sensitivity by flashing where:
  - 1 flash – the lowest sensitivity set, the bite alarm reacts to very large fishing rod bending (tilt)
  - 2 flashes – low sensitivity set, the bite alarm reacts to large fishing rod bending (tilt)
  - 3 flashes – medium sensitivity set, the bite alarm reacts to medium fishing rod bending (tilt)
  - 4 flashes – high sensitivity set, the bite alarm reacts to minor fishing rod bending (tilt)
  - 5 flashes – highest sensitivity set, the bite alarm reacts to slight fishing rod bending (tilt)
- Turn ON/OFF sounds is done by pressing the switch 3 times in quick succession to the SET position. The change is confirmed by three fast “beeps” of the bite alarm. The sound settings are saved in the device’s memory even after turning off.

## The bite alarm functions

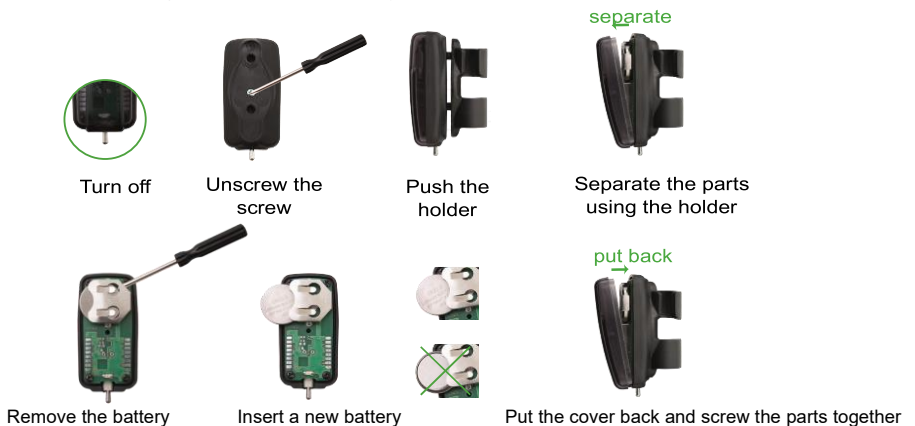
As soon as the bite alarm sensor detects a change in fishing rod bending, the signal is analysed and in the case of a bite evaluation based on the selected sensitivity, it triggers the optical and sound signalling and transmits to a compatible receiver. The red LED has a memory function after a bite; it stays lit for around 10 seconds. If the bite



continues, the bite alarm continues to indicate the bite intermittently. In order to avoid disturbance during the catch, the indication is automatically silenced after several intense bites, and the bite evaluation is automatically restored when the fishing rod is calm.

## Battery replacement

Before replacing the battery, remove the bite alarm from the fishing rod by pulling it out of the holder and loosening the screw at the bottom of the bite alarm. Removing the top cover allows you to access the battery holder. It comes out of the holder by pressing the battery. When inserting a new battery, beware of its polarity!!! The plus pole is located at the top – see the graphic illustration of battery replacement.



## The Fishtron CatFish TX3 specifications

- Supply voltage: 3V (1 CR2032 battery)
- Integrated transmitter: 868 MHz
- Dimensions (H x W x D): 62 x 27.5 x 22 mm, weight: 25.5 g

## How to Reach the Kit's Maximum Range

*The kit's range, the alarm – receiver, is up to several hundred metres in free space and up to 50 m on flat surfaces. Any terrain inequality, shore, slope, buildings, cars or other obstacles limit the range. If the current conditions and fishing conditions allow it, the alarm should be located at least 0.5 m above-ground (if you have an extreme range requirement). Have the receiver with you and keep it in the top pocket or use a neck strap (threaded under the stainless steel rod at the top of the receiver) if you want to reach the maximum range. Don't place the receiver or transmitter on metal objects. Both the transmitter and the receiver should have their antennas upward. Despite the kit's large reach, we encourage you to observe the Fishing Regulations and don't leave your fishing area at a distance greater than permitted by the Fishing Regulations. Always verify the range at the location after installing the bite alarms.*

## Declaration of Conformity

The device complies with EU directives and has a Declaration of Conformity.

## Post-Warranty Service

The post-warranty service is performed exclusively by the Czech manufacturer – FLAJZAR, s.r.o. We will apply our maximum effort to help you solve every problem in the shortest possible time.

Quick email contact in case of problems: [obchod@flajzar.cz](mailto:obchod@flajzar.cz).

## Recycling

Information for the user's disposal of electrical and electronic equipment. The symbol on the product, its packaging or in the accompanying documentation means that the used electrical or electronic products must not be disposed of together with municipal waste. In order to dispose of the product properly, take it to the designated collection points where it will be accepted free of charge.



## Batteries

Don't disassemble, short-circuit or throw the batteries into a fire. Don't recharge the batteries.

## Manufacturer/Service/Technical Support

FLAJZAR, s.r.o.  
Svatoplukova 1199  
698 01 Veselí nad Moravou  
phone: + 420 776 586 866  
email: [obchod@flajzar.cz](mailto:obchod@flajzar.cz)  
[www.flajzar.cz](http://www.flajzar.cz)

## ES PROHLÁŠENÍ O SHODĚ

Výrobce : FLAJZAR, s.r.o., se sídlem Kasárna 500, Bzenec, PSČ: 696 81. IČO: 01616161,

prohlašuje

Zařízení: FISHTRON CATFISH TX3  
Typ/model: FISHTRON CATFISH TX3

Je ve shodě s ustanoveními vlády č. 426/2016Sb. Ve znění pozdějších předpisů, kterými se stanoví technické požadavky na rádiová a na telekomunikační koncová zařízení, uvedené ve směrnici 2014/53/EU.

- 1) Počet kanálů: 1
- 2) Kmitočtová pásma: 868,000 až 868,600 MHz
- 3) Vř výkon: 13dBm

Zařízení splňuje požadavky následujících předpisů a norem :

ČSN ETSI EN 300 220-2 V 2.4.1 (2013); ČSN ETSI EN 300 220-1 V 2.4.1: (2013);  
ČSN EN ISO/IEC 17025  
ČSN EN 60950-1 ed.2

**Výrobek je bezpečný za podmínek obvyklého použití a v souladu s návodem k výrobku.**

Prohlášení o shodě je vydáváno na základě těchto podkladů:

- 1) Zkušební protokol č. 194300-242/2017, vydaný Institutem pro testování a certifikaci, a.s., akreditovaná zkušební laboratoř č. 1103, Víta Nejedlého 691, Vyškov 68201
- 2) Zkušební protokol č. 414103388AE, vydaný institutem pro testování a certifikaci, a.s., zkušební laboratoř elektrických výrobků č.1004.3, Sokolovská 573, Uherské Hradiště 68601
- 3) Protokol elektrické bezpečnosti vydaný dne 10.10.2017

Na tento výrobek, byla umístěna značka CE.

Toto prohlášení je vydáno na výhradní odpovědnost výrobce.

Ve Bzenci dne 23.10.2017



Vojtěch Páník – Jednatel : .....